

Thank you for choosing HYPSSOS - Hybrid Power System by Ferrum.  
We strongly believe you will enjoy the improvement that HYPSSOS can  
provide to your current audio system!

HYPSSOS by **Ferrum**

[www.ferrum.audio](http://www.ferrum.audio)

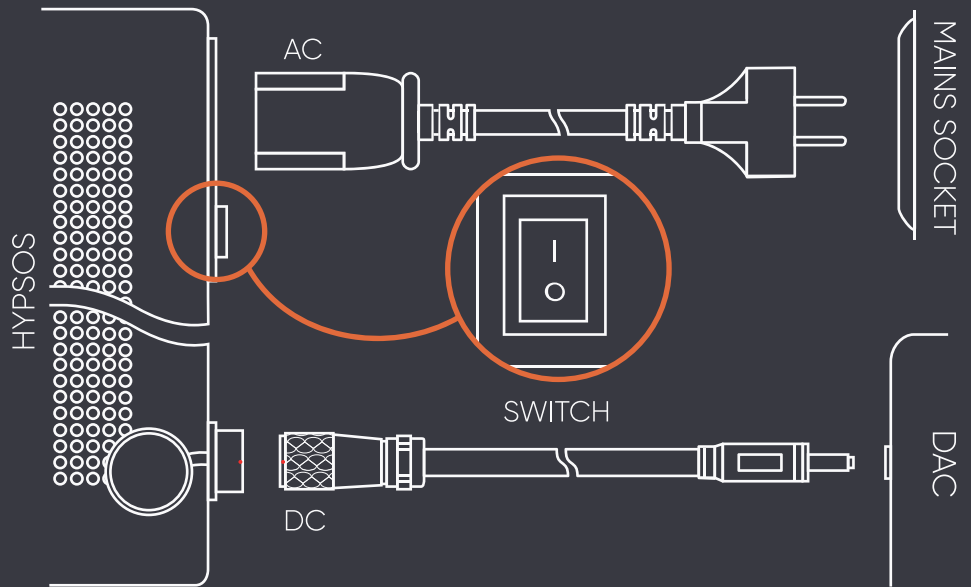


# Quick Setup Guide

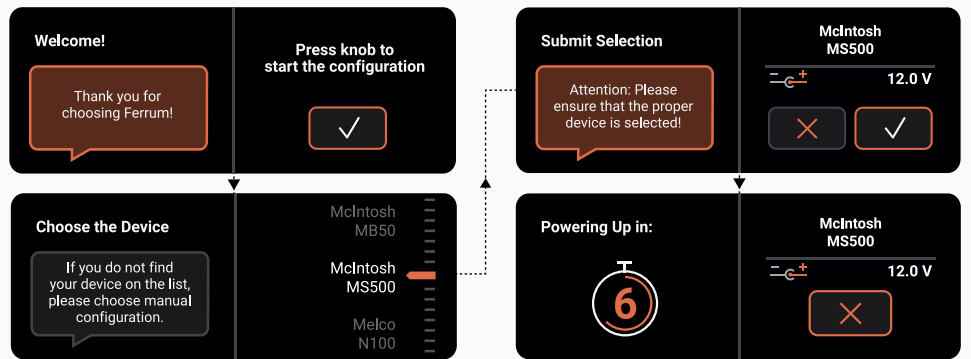
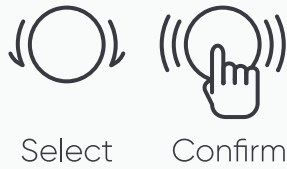
Please read the manual before using HYPSSOS!

## Connect and turn on the HYPSSOS

Connect all the cables before switching on the HYPSSOS.

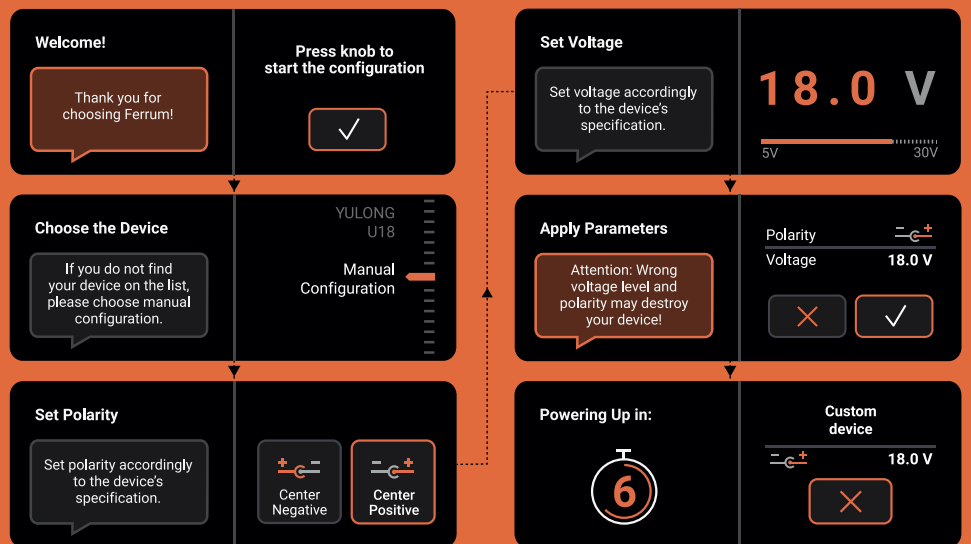


## Choose from the list



## Manual configuration

For the full manual please visit:  
[ferrum.audio/support](http://ferrum.audio/support)  
 or scan the QR code.



## Warranty

Each individual HYPSSOS undergoes comprehensive quality control and a complete test before shipping. This PSU is warranted by Ferrum to the owner against defects in workmanship and materials used in manufacture for a period of two years from the date of purchase. If you suspect that your product is faulty, please contact the place of purchase or you contact Ferrum support. Prior to shipping for warranty services the customer or dealer must obtain an RMA number from Ferrum for warranty services. Units sent without an RMA number will not be accepted. Proof of purchase in the form of a bill of sale or received invoice, which is evidence that this product is within the warranty period, must be presented to obtain warranty service. This warranty is void and inapplicable if the factory applied Serial Number has been altered or defaced from this product. Faults due to customer misuse, unauthorized modifications or accidents are not covered by this warranty. Please pack the product very carefully, preferable in the original packing, to be sure no damage can be done during shipment.

## Information on Disposal for Users of Waste Electrical & Electronic Equipment (private households).

The Wheelie Bin symbol on the products and/or accompanying documents means that used electrical and electronic products should not be mixed with general household waste. Disposing of this product correctly will help save valuable resources and prevent any potential negative effects on human health and the environment. To properly dispose harmful substances and recycle the product, the user is obliged to return it at the point of collection of electrical and electronic equipment waste. For more information please contact your local authorities, waste disposal units or retailer.